

BAXI

BIOMASS

Carbon neutral heating solutions

Bioflo | Multi-heat | Solo Innova



Baxi makes everything make sense.

For over 150 years, Baxi has led the way with new and pioneering heating solutions. We are proud that we still manufacture boilers in the UK, close to the site where Richard Baxendale first established the business, in Preston, Lancashire.

Today, our dedication to innovation is greater than ever as we develop new ways to heat homes. We are committed to delivering sustainable heating and hot water solutions that minimise energy usage, cut carbon emissions and deliver maximum value for you and your customers.

Above all, we want to be at the heart of the home, bring warmth to people's lives and protect the planet for future generations.

Here are just some of the many heating solutions we offer that can be tailored to suit your needs:

- High efficiency boilers
- Solar thermal and PV
- Ground source heat pumps
- Micro-CHP technology
- Biomass solutions
- Vented and unvented cylinders
- Flue gas heat recovery devices



All our products are backed by **heateam**, our award-winning dedicated UK service centre and a national network of 270 Gas Safe registered engineers, who are on hand to offer expert help and advice.



Good quality wood pellets have a higher calorific power (4.9 kW/kg) than timber (4.4 kW/kg).



- A** Pellet loading door
- B** Fuel storage compartment
- C** Intelligent feed system
- D** Combustion chamber
- E** Automated ash compartment



Baxi Bioflo™

Baxi Bioflo is one of the best-selling pellet burning biomass system boilers in Europe. It is a new kind of biomass boiler. Compact and stylish it is equally at home in living areas as it is in traditional 'out of sight' boiler locations.

At 94% efficient, it is a highly attractive alternative to conventional off-gas solutions, such as oil and LPG, offering clean, sustainable, 'carbon neutral' heating and hot water all year round.



How it works

Baxi Bioflo is a manual feed boiler. Pellets are fed into a fuel hopper on the top of the boiler and stored in a 37kg compartment at the rear.



The boiler automatically fires when the control system signals a heating requirement and pellets are released into the combustion chamber.



Once even combustion is established, the system automatically switches to modulation mode, during which output varies between 100% and 30% (12kW - 3.8kW) for maximum efficiency.



An intelligent internal feed system monitors fuel consumption and drip feeds pellets from the storage compartment into the combustion chamber, as and when required.



Water heated in the boiler is transferred to the radiator system for heating and to a separate unvented cylinder for hot water.



A light appears on the control panel when fuel needs topping up. In typical conditions the fuel supply will need to be replenished every three to four days.

Pellets

Wood pellets are manufactured by hot-extruding compressed sawdust, which is produced during the working of natural dried wood.

Lignin contained in the wood bonds the sawdust so there is no need for glues or binders.

Not all pellets are produced to the same high quality, therefore Baxi advises using the highest quality pellets.

The recognised standard of quality in the UK for wood pellets is EN plus. This ensures the following specification;

- Moisture content below 10%
- Caloris value of 4.8 - 5.2kWh/kg
- Ash content of <1% (low)
- Bulk density of around 650kg/m³
- Length: max 30mm
- Chlorine content of 0.03% or less
- No additives

The recommended supplier of EN Plus pellets is

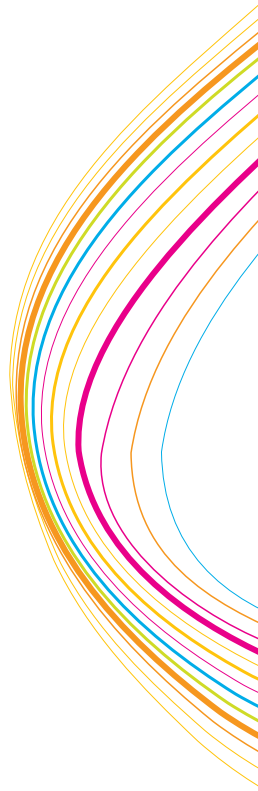
VERDO and



For local distribution outlets please visit www.brites.eu and www.verdorenewables.co.uk

Makes sense for specifiers, installers and end users

Baxi Bioflo is a simple, one product solution for compliance with the most stringent environmental legislation, including the Code for Sustainable Homes (Code 4). It is simple to install, service and maintain. For end users it makes an attractive feature in living areas, is easy to operate and economical to run.



Benefits		Features											
		Carbon neutral solution	MCS certified	Modulating output 3.8-12kW	Thermo-probe temperature control	Automatic pellet feed	Integral control module and relay box	Automatic ignition	Integral safety features as standard	Sealed system	Air kit (sealed room applications)	Front and side service access	Onsite commissioning by heatteam
For Specifiers	Saves energy	○	○					○					○
	Increases efficiency		○	○									○
	Reduces CO ₂ emissions		○										
	Exceeds CSH Level 4 (SAP 62%)	○											
	Compatible with other renewable technologies									○			
	Suitable for siting in living areas									○	○		
For Installers	Suitable for Clean Air Zones	○						○					
	Reduces installation costs						○	○	○	○			○
	Simplifies maintenance/servicing			○		○					○		
For End Users	Prolongs service life				○								○
	Saves energy	○	○					○					○
	Simple to use				○	○	○						
	Access to funding		○										
	Ensures safe operation							○		○			○
	Reduces life time costs			○	○	○							○
	Minimises fill-up time				○								



Compact and stylish Baxi Bioflo is a highly attractive alternative to oil and solid fuel.



Installation

Baxi Bioflo is designed for installation within the dwelling. It must be floor mounted on a base that is able to accept the weight of the appliance when full of water and also its chimney (if the chimney is not independently supported). The base must be non-combustible and of size and construction that is in accordance with current Building Regulations.

It is a system boiler that can provide all the home's heating and hot water requirements.

However, it can be combined with alternative heat generators such as solar thermal, for even greater savings.

All the necessary hydraulic components for a heating circuit, as well as hot water preparation, are integrated within the boiler.

Ventilation

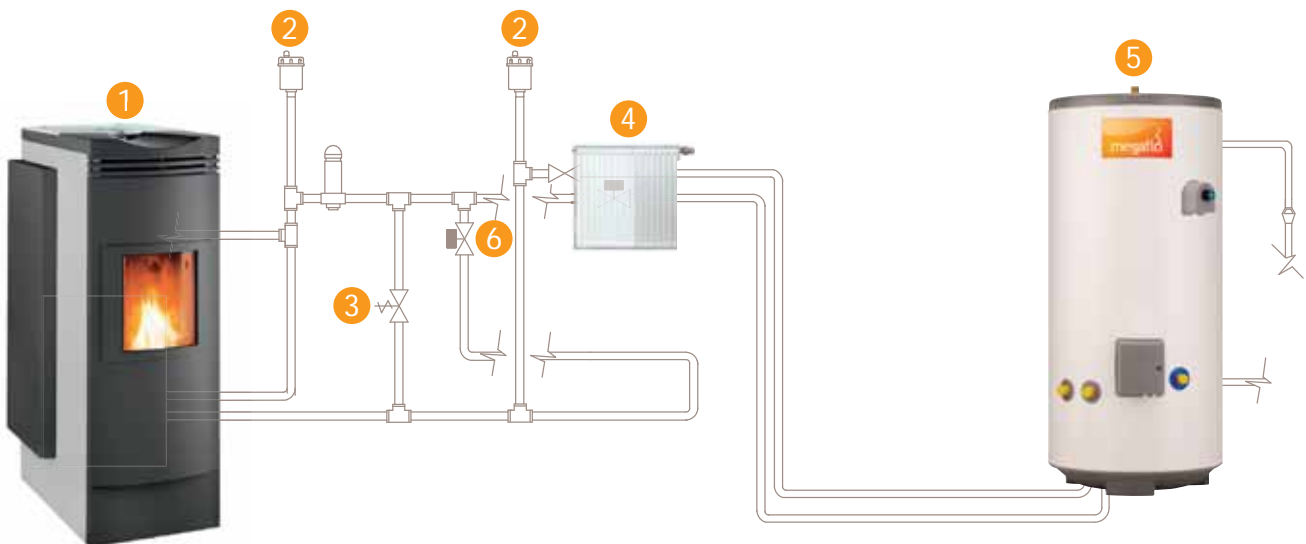
The outlet from the chimney should be above the roof of the building. The boiler must not be installed into

a chimney that serves any other heating appliance or sited in a room where an extractor or ceiling/paddle fan is fitted.

The chimney height must be sufficient to ensure an adequate draught to clear the products of combustion and prevent smoke emission into the room. A carbon monoxide sensor must be fitted in the same room as the appliance and positioned in accordance with Building Regulations Part J.

To complete the installation shown below we recommend that Baxi Bioflo is installed with a Heatrae Sadia Megaflo cylinder.

Baxi Bioflo typical installation



- 1 Baxi Bioflo
- 2 Automatic air vent
- 3 Auto bypass valve
- 4 Heating circuit
- 5 Megaflo unvented hot water cylinder
- 6 System zone valve



Accessories

For maximum convenience Baxi Bioflo can be supplied with a secure, outdoor fuel storage bin so that the householder doesn't have to wait in for pellets to be delivered. This sturdy, all weather, lockable plastic container has a 500 litre capacity, to hold up to 350kg of bagged fuel, approximately 5 weeks supply. It is available in an unobtrusive shade of green and should be mounted on a hard-standing surface.



Technical Data

Description	Product Code
Baxi Bioflo 12kw (Granite)	720338301
Baxi Bioflo 12kw (Pearl)	720338401
Pellet storage bin	720338501
Carbon monoxide alarm	INP0027

Bioflo	12kW	
Technical Data:		
Fuel		DINplus certified wood pellets
Total thermal output	kW	12
Thermal output for water	kW	3.8 - 10.9
Thermal output from room heater within boiler (no heat shield)	kW	0.6 - 1.6
Thermal output from room heater within boiler (heat shield applied)	kW	0.3 - 1.1
Total gross efficiency	%	94.1
Flue gas connection (diameter)	mm	125
Flue gas temperature (full/part load)	°C	125/80
Installation Data:		
Weight	kg	218
Depth	mm	691
Width	mm	530
Height	mm	1230
Hopper volume	kg	37
Water volume (within boiler)	litre	30
Electrical Consumption:		
Maximum current consumption	Amps	5.8
Maximum ignition consumption	Watts	860
Heating Operation:		
Full load	Watts	50
Part load	Watts	33
Idle	Watts	8

